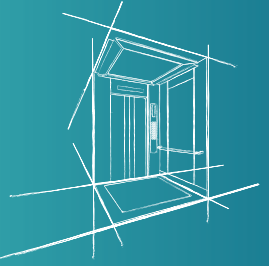




SILVER
Elevator Korea



PASSENGER
PANORAMIC
& HOSPITAL
ELEVATORS

2017 NEW SERIES

SILVER ELEVATOR KOREA

OUN / COMO / LUXXO / VISO / ARIS

2017 NEW SERIES

Design Concept I

Changes in the New Series

Concept

THIN

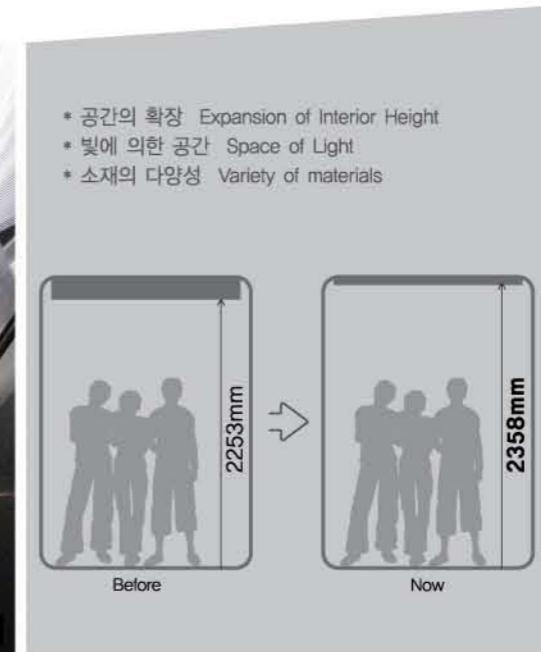
EASY
to install

LOW
price



SPACE

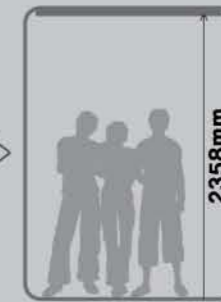
1



- 공간의 확장 Expansion of Interior Height
- 빛에 의한 공간 Space of Light
- 소재의 다양성 Variety of materials



Before



Now



LIGHT

2



3



MATERIAL

4



5

CEILING HEIGHT(천장 높이)를 70mm로 하여 카내부 높이를 확장함으로써 공간효율을 높임.
Ceiling height of 70mm makes car internal height higher which leads to space efficiency.

기존 표준 디자인 공급가격에 신규 소재와 새로운 디자인 적용으로 영업역량 확대
Expansion of sales capability by applying new materials and new design at the price level of existed standard designs.

- 1_OUN
- 2_ABIS
- 3_VISO
- 4_COMO
- 5_LUXXO

SILVER ELEVATOR KOREA

SILVER ELEVATOR KOREA IS DEFINED BY THE PHRASE YOUR COMPANY IN KOREA OVER 50 YEARS ELEVATOR INDUSTRY IN KOREA HAS BEEN PHENOMENALLY DEVELOPED ALONG WITH THE ECONOMIC GROWTH. WITH THIS LONG YEARS KNOW-HOW AND EXPERTISE, WE SUPPLY THE BEST QUALIFIED AND SAFE ELEVATOR THAT MEETS CUSTOMER'S VALUABLE AND VARIOUS REQUIREMENTS.



ARMAN KALA KAZAKHSTAN • ART HOUSE KAZAKHSTAN • BASHNYA VYSOTSKOGO EKATERINBURG RUSSIA • BI CITY KAZAKHSTAN • FANAT, IRKUTSK RUSSIA • HOME SWEET HOME, FABRICHNAYA 7 TYUMEN RUSSIA • HOTEL TAIGA, BRATSK RUSSIA • ISFAHAN CHAMBER OF COMMERCE, IRAN • ISSYK-KUL RACECOURSE, KYRGIZSTAN • LAZURNIY ASTANA, KZAKHSTAN • PARK AVENUE KAZAKHSTAN • PROMENADE EXPO, ASTANA KAZAKHSTAN • TC APELSIN NAKHODKA, RUSSIA • TC BACHURIN, VLADIVOSTOK RUSSIA • TC MOSCOW, USSURIISK RUSSIA • ZAGS KAMCHATKA, RUSSIA • ZHK GREEN PALACE SAKHALIN, RUSSIA • DAMA TOPARY OFFICE TURKMENISTAN • SONG LOC 2 HOTEL VIETNAM • HOTEL SEYRANA SETTA INSAAT TURKMENISTAN • TRADE CENTER – MOBKA MOBILYA SANYI • DEPARTMENT OF TRANSPORT POLICE VIETNAM





■ Front



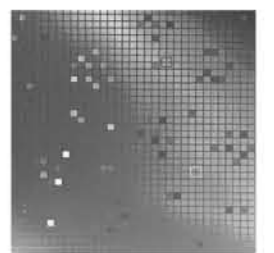
■ Rear



OUN

_ Simple Design with high public versatility that looks great with any kind of the building's interior.
_ 대중적 범용성을 높여 어느 공간에나 어울리는 심플한 디자인.

CEILING	CS-S1 (HEIGHT : 70mm, STS Polishing Mirror + STS Hairline + LED / Black Painted Steel)
CAR DOOR	STS Mirror + Laser Marking (LM-07)
FRONT WALL	VCM Panel (Vinyl Coated Metal, Vib Pattern)
SIDE WALL	VCM Panel (Cubic) + VCM Panel (Vib Pattern)
REAR WALL	VCM Panel (Cubic) + VCM Panel (Vib Pattern)
HANDRAIL	HR-01 (STS Polishing Pipe)
FLOOR	Decotile



VCM Panel (Cubic)



COMO

_ Expansion of the space Design coming from the new arrangement of the panels with application of Wood Pattern PCM as a classical image.
_ 판넬 배열의 변화로 공간의 확장성을 높이고, 우드패턴 PCM으로 클래식한 이미지를 적용.



■ Front



■ Rear

CEILING	CS-S2 (HEIGHT : 50mm, STS Polishing Mirror + Acrylic Lighting Case (Black Color) + LED / Black Painted Steel)
CAR DOOR	PCM Panel (Pre Coated Metal, Wood)
FRONT WALL	VCM Panel (Vinyl Coated Metal, Vib Pattern)
SIDE WALL	VCM Panel (Vib Pattern) + PCM Panel (Wood)
REAR WALL	PCM Panel (Wood) + STS Mirror (Customized Logo Laser Marking)
HANDRAIL	Wood
FLOOR	Decotile

PCM Panel (Wood)





LUXKO

_ Modern Design that is compiled by continuous line of LED from ceiling, rear wall to the floor level.
_ CEILING과 REAR WALL의 LED조명과 바닥으로 이어지는 라인을 모던한 형태로 표현



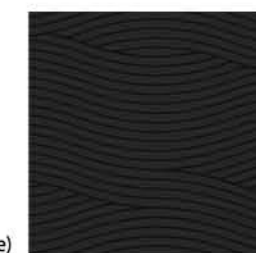
■ Front



■ Rear

CEILING	CS-S3 (HEIGHT : 70mm, PCM Panel (Black Wave) + STS Polishing Mirror + LED / Black Painted Steel)
CAR DOOR	PCM Panel (Pre Coated Metal, Black Wave)
FRONT WALL	STS Hairline
SIDE WALL	STS Hairline + PCM Panel (Black Wave)
REAR WALL	STS Hairline + PCM Panel (Black Wave) + LED
HANDRAIL	HR-01 (STS Polishing Pipe)
FLOOR	Decotile

PCM Panel(Black Wave)





■ Front



■ Rear



VISO

Design of a Modern Space Composition using surface and lines.
면과 선을 이용한 Modern한 공간 구성의 디자인.

CEILING	CS-L3 (HEIGHT : 125mm, STS Polishing Mirror + LED + LED Halogen)
CAR DOOR	STS Mirror + Laser Marking (LM-04)
FRONT WALL	VCM Panel (Vinyl Coated Metal, Vib Pattern)
SIDE WALL	VCM Panel (Vib Pattern) + Printing Glass
REAR WALL	VCM Panel (Vib Pattern) + Printing Glass
HANDRAIL	HR-01 (STS Polishing Pipe)
FLOOR	Decotile



Printing Glass



ABIS

_ New Space design created by using light depth effect and black color for walls.
_ 빛의 심도 효과를 이용한 천장 조명과 Black Wall panel로 인한 새로운 공간 연출.



■ Front



■ Rear

CEILING	CS-L2 (HEIGHT : 125mm, STS Hairline + LED + LED Halogen)
CAR DOOR	STS Hairline Inco Black + Laser Marking (LM-08)
FRONT WALL	STS Hairline
SIDE WALL	STS Hairline + STS Hairline Inco Black
REAR WALL	STS Hairline + STS Hairline Inco Black + Laser Marking (LM-08)
HANDRAIL	HR-01 (STS Polishing Pipe)
FLOOR	Decotile

STS Hairline Inco Black + LM08



YOUR COMPANY IN KOREA



ARMAN KALA APT, KAZAKHSTAN



HOME SWEET HOME, FABICHNAYA 7 TYUMEN, RUSSIA



PARK AVENUE, KAZAKHSTAN



ZAGS KAMCHATKA, RUSSIA



ZHK GREEN PALACE SAKHALIN, RUSSIA



TC BACHURIN, VLADIVOSTOK RUSSIA

TC MOSCOW, USSURIISK RUSSIA



ART HOUSE, KAZAKHSTAN



HOTEL TAIGA, BRATSK RUSSIA



SONG LOC 2 HOTEL, VIETNAM



DAMA TOPARY-OFFICE, TURKMENISTAN



LAZURNIY ASTANA, KAZAKHSTAN



FANAT, IRKUTSK RUSSIA



BASHNYA VYSOTSKOGO EKATERINBURG RUSSIA



ISFAHAN CHAMBER OF COMMERCE, IRAN



TC APELSIN NAKHODKA, RUSSIA



ISSYK-KUL RACECOURSE, KYRGIZSTAN



HOTEL SETRANA-SETTA INSAAT, TURKMENISTAN

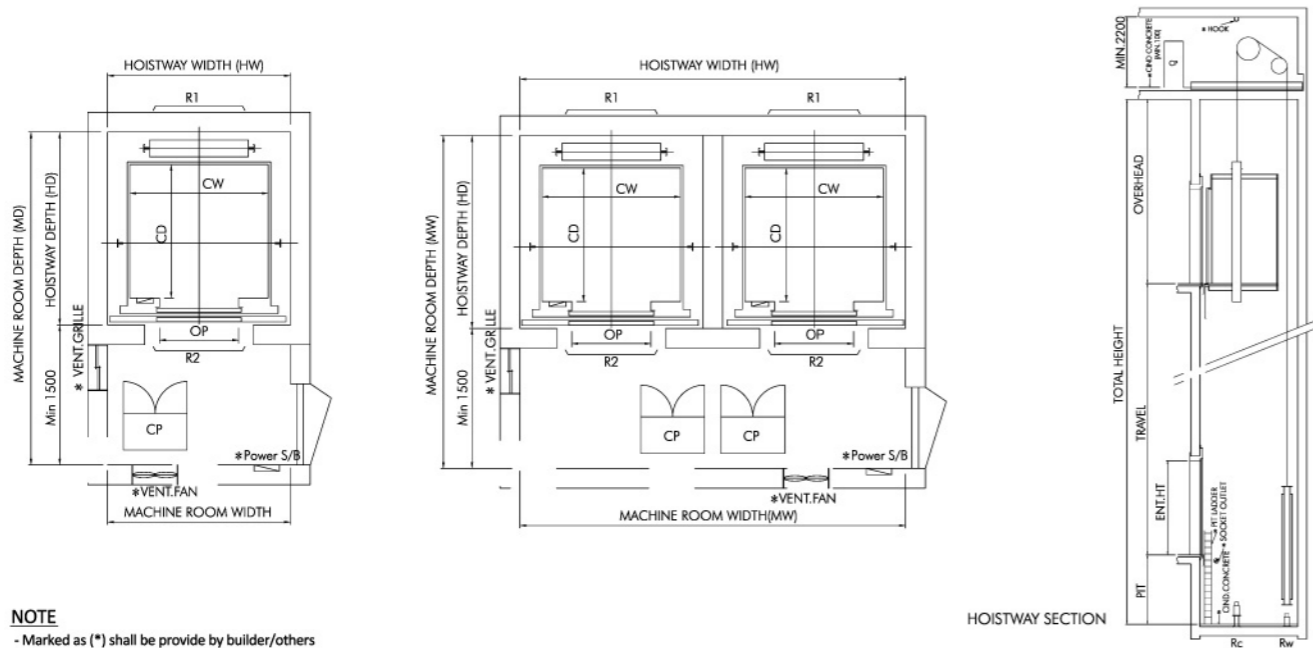


BI CITY, KAZAKHSTAN



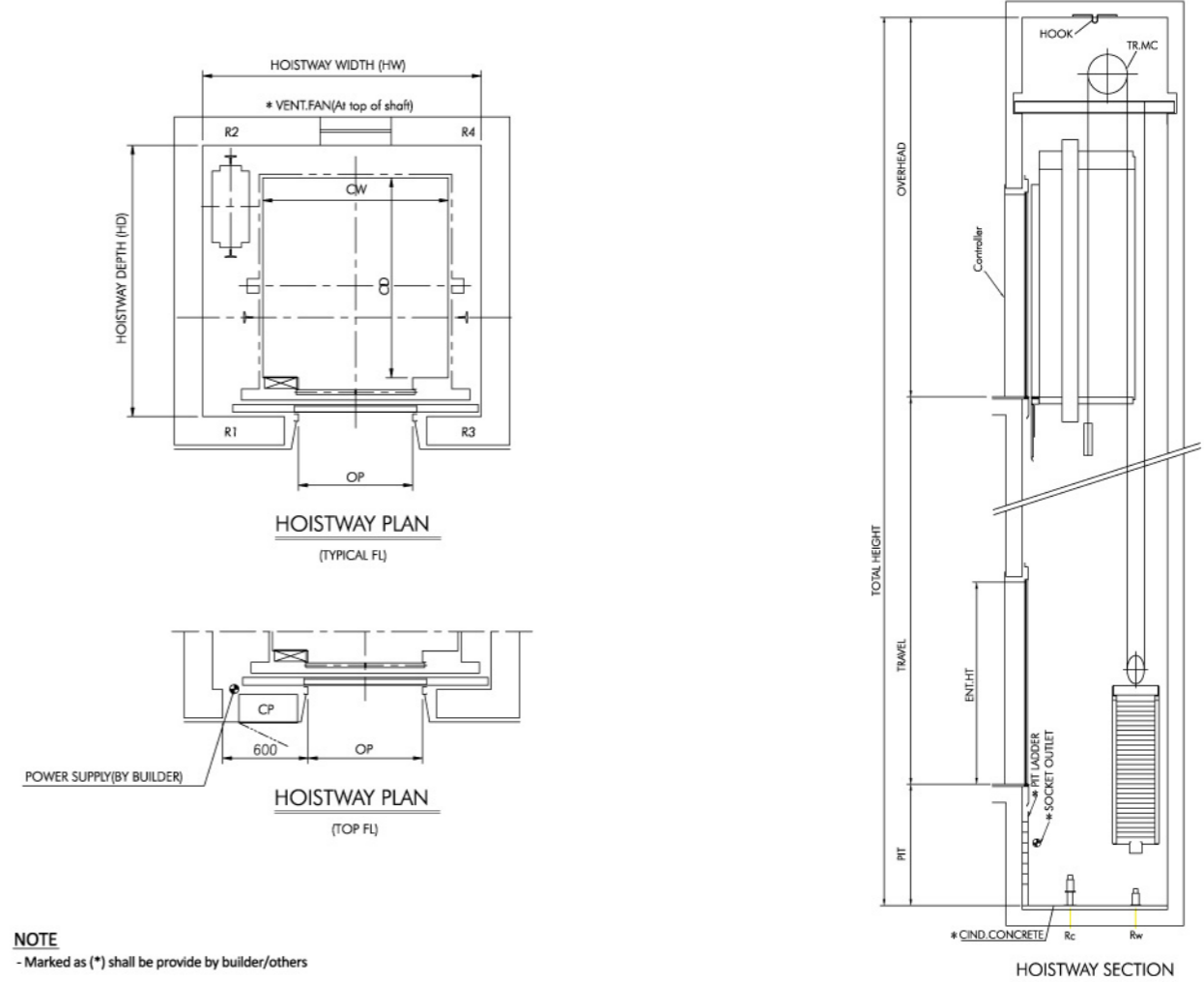
TRADE CENTER - MOBKA MOBILYA SANAY

MR (MachineRoom) Type



NOTE
- Marked as (*) shall be provide by builder/others

MRL (MachineRoomLess) Type



NOTE
- Marked as (*) shall be provide by builder/others

(Unit : mm)

Speed [m/min]	Capacity		Door Opening		Car Insize		Hoistway size				Machine room size				MC Room Reaction Load (kg)		Pit Reaction Load(kg)		
	person	[kg]	Type	Width	CW	CD	HW	HD	HW	HD	MW	MD	MW	MD	R1	R2	Rc	Rw	
60 ~ 105	5	400	2P-CO	800	1100	950	1750	1550	3650	1550	2050	3050	3950	3100	3700	2300	5150	3200	
	6	450	2P-CO	800	1100	1100	1550	1700	3250	1700	1850	3200	3550	3200	3800	2350	5500	3300	
	7	525	2P-CO	800	1400	1000	1800	1650	3750	1650	2100	3150	4050	3050	4200	2800	6200	4500	
	8	630	2P-CO	800	1400	1100	1800	1700	3750	1700	2100	3200	4050	3150	4500	3100	6550	4700	
	9	680	2P-CO	800	1400	1250	1800	1850	3750	1850	2100	3350	4050	3300	4900	3400	6550	4700	
	10	750	2P-CO	800	1400	1350	1800	1950	3750	1950	2100	3450	4050	3400	5400	3850	7800	5500	
	12	900	2P-CO	900	1600	1350	2000	1950	4150	1950	2300	3450	4450	3400	5750	4100	9400	6650	
	13	1000	2P-CO	1000	1600	1400	2150	2050	4500	2050	2350	3500	4850	3500	6150	4600	9950	6900	
				2P-CO	800	1100	1100	2550	1750	5250	1750	2850	3250	5550	3250	6150	4600	9950	6900
				2P-CO	800	1100	1100	2550	1750	5250	1750	2850	3250	5550	3250	6150	4600	9950	6900
				2P-CO	800	1100	1100	2550	1750	5250	1750	2850	3250	5550	3250	6150	4600	9950	6900
	15	1150	2P-CO	1000	1800	1500	2250	2150	4650	2150	2550	3600	4950	3550	9400	7750	12300	8750	
17	1250	2P-CO	1100	1950	1400	2600	2100	5350	2100	2900	3550	5650	3600	10000	8250	13600	9500		
21	1600	2P-CO	1100	1950	1750	2600	2600	5350	2600	2900	4100	5650	3800	11600	8700	15400	11600		
24	1800	2P-CO	1200	2350	1600	2900	2300	5950	2300	3200	3800	6250	3800	13000	9700	17300	13100		
26	2000	2P-CO	1200	2350	1700	2900	2400	5950	2400	3200	3900	6250	3900	14400	10600	19100	14600		
33	2500	2P-CO	1200	2350	2000	2900	2700	5950	2700	3200	4200	6250	4200	17900	12600	23700	18300		

Speed [m/min]	Capacity		Door Opening		Car Insize		Hoistway size				Machine room size				MC Room Reaction Load (kg)		Pit Reaction Load(kg)	
	person	[kg]	Type	Width	CW	CD	HW	HD	HW	HD	MW	MD	MW	MD	R1	R2	Rc	Rw
120 ~ 150	12	900	2P-CO	900	1600	1350	2150	2050	4500	2050	2450	3850	4500	3850	11100	7600	13300	10100
	13	1000	2P-CO	900	1600	1400	2150	2100	4500	2100	2450	3900	4500	3900	11650	7800	13900	10600
	15	1150	2P-CO	1000	1800	1500	2350	2200	4900	2200	2650	4000	4900	4000	12300	8300	17600	13300
	17	1250	2P-CO	1000	1900	1500	2450	2200	5100	2200	2750	4000	5100	4000	13100	8900	18000	13600
	21	1600	2P-CO	1100	1900	1800	2450	2500	5100	2500	2750	4300	5100	4300	13900	9400	19600	14400

Capacity (kg)	Speed (m/min)	Over head (mm)	Pit Depth (mm)	Machine Room Height(mm)	Remark
400 ~ 1600	60	3800	1200	2200	(1200) : PU buffer
	90	3900	1500	2400	
	105	4000	1600	2400	
1800 ~ 2500	45	3900	1600	2600	
	60	4200	1700	2600	

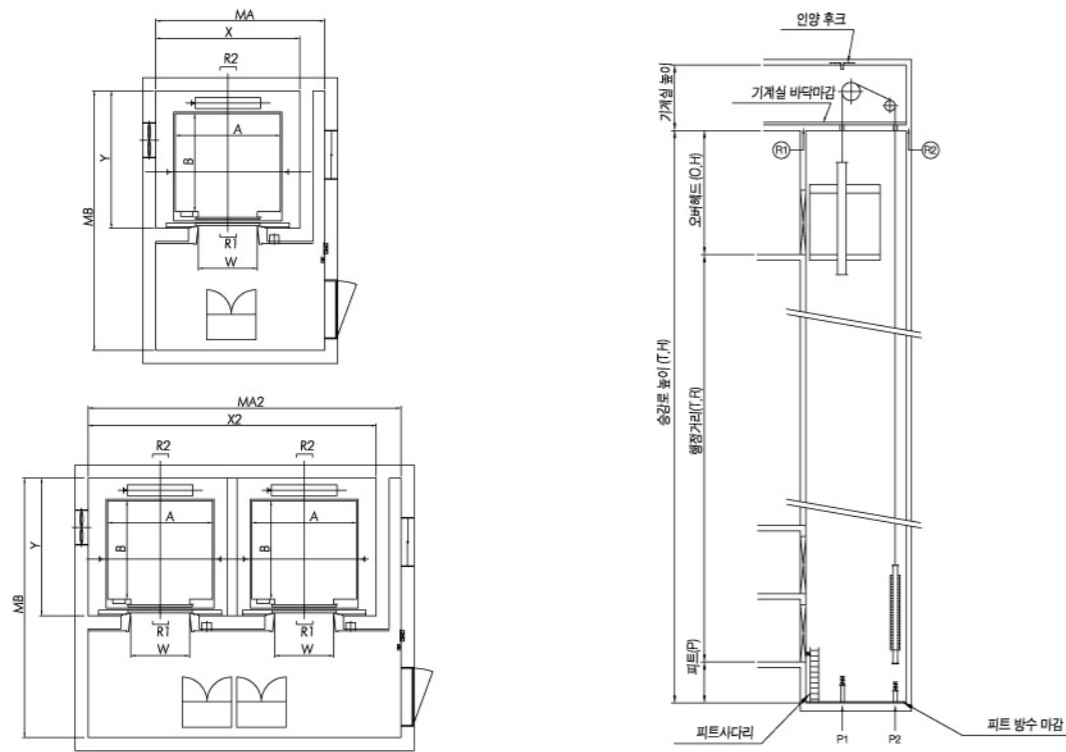
Speed	Over head (mm)	Pit Depth (mm)	Machine Room Height(mm)	Remark
120	4600	2000	2400	
150	4800	2200	2400	

(Unit : mm)

Speed [m/min]	Capacity		Opening		Car Insize		Hoistway size		Top Beam Reaction Load [kg]				Pit Reaction Load(kg)		
	person	[kg]	Type	Width	CW	CD	HW	HD	R1	R2	R3	R4	Rc	Rw	
60 ~ 105	6	450	2P-CO	700	1100	1100	1750	1800	2200	4000	1500	400	4500	3250	
	7	525	2P-CO	800	1100	1300	1850	1850	2200	4000	1500	400	4500	3250	
	8	630	2P-CO	800	1100	1400	1850	1900	2200	4300	1600	600	4800	3500	
	9	680	2P-CO	800	1300	1300	1950	1850	2200	4300	1600	600	4800	3500	
	10	750	2P-CO	800	1300	1400	1950	1900	2300	4500	1700	600	5000	3700	
	12	900	2P-CO	900	1500	1400	2150	1900	2600	5100	1900	700	5700	4300	
	13	1000	2P-CO	1000	1600	1400	2300	1900	2600	5200	1900	700	6700	4800	
				2P-CO	1000	1100	2100	2150	2500	2600	5200	1900	700	6700	4800
	15	1150	2P-CO	1000	1800	1450	2400	1950	2900	5850	2150	850	8000	5800	
	17	1275	2P-CO	1100	2000	1400	2950	2200	3500	6800	3500	1100	9400	6800	
	21	1600	2P-CO	1200	2100	1600	3050	2300	4700	7200	3000	1200	11000	7500	
	26	2000	2P-CO	1200	2350	1650	3300	2450	6200	7600	3500	1400	17500	10500	

Capacity (kg)	Speed (m/min)	Over head (mm)	Pit Depth (mm)	Remark
400 ~ 1150	60	3800	1500(1200)	(1200) : PU buffer
	90	3900	1600	
	105	4000	1700	
1200 ~ 2000	60	4500	1700	
	90	4700	1800	
	105	4900	2000	

■ 기계실 있는 엘리베이터 (MR Type, 1.0m/sec ~ 1.75m/sec)



표준 규격

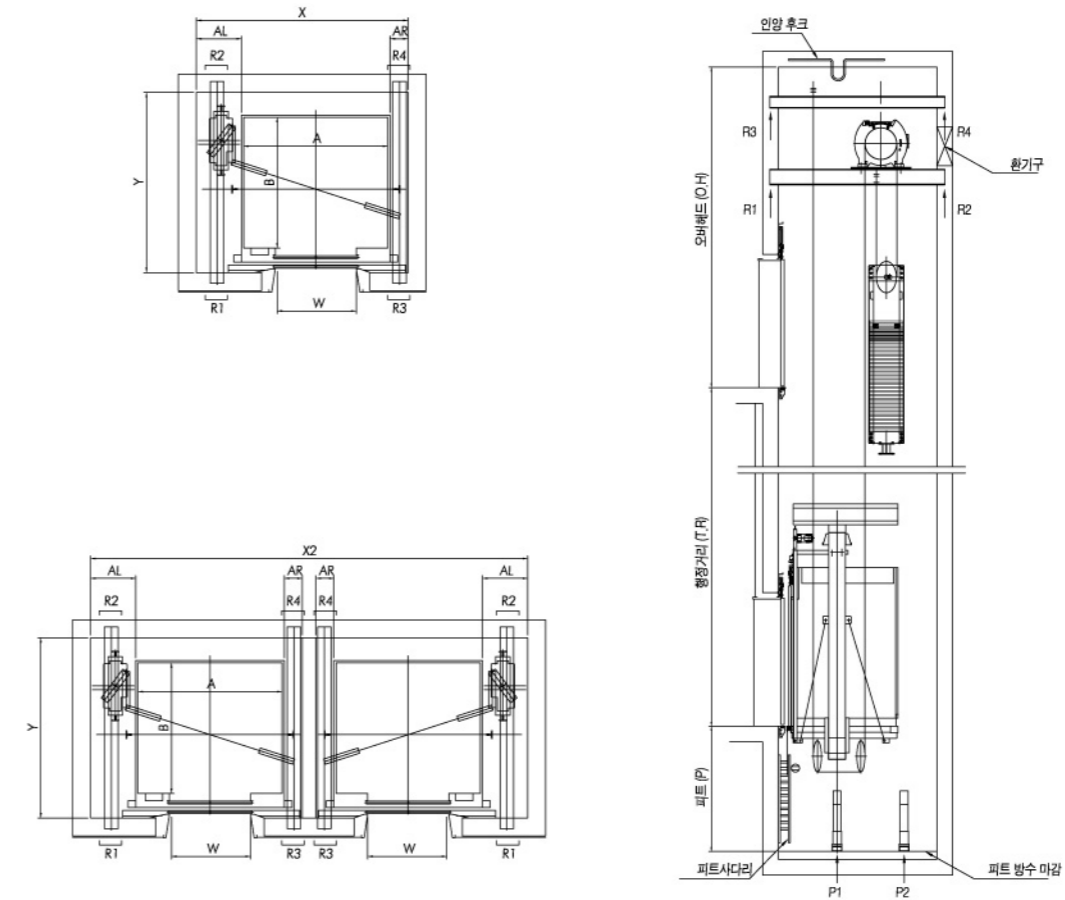
정격속도(m/sec)	오버헤드(OVERHEAD)	피트(PIT)	기계실 높이(MH)		
			6 ~ 11 인승	13 ~ 17 인승	20,24 인승
1.0(60)	3900	1200	2200	2400	2700
1.5(90)	4100	1500	2400	2400	2700
1.75(105)	4200	1600	2400	2400	2700

정격속도(m/sec)	적재하중(kg)	출입문 폭×높이(mm)	카내부 규격(mm)	승강기 내부규격(mm×mm)				기계실 내부규격(mm×mm)				머신룸 반력값(kg)		피트 반력값(kg)			
				1 Car		2 Car		1 Car		2 Car		R1	R2	P1	P2		
				X	Y	X2	Y	MA	MB	MA2	MB						
1.0	6	450	700×2100	1150	1130	1600	1800	3300	1800	1900	3500	3900	3500	2300	3700	5600	4450
	8	550	800×2100	1300	1130	1800	1800	3700	1800	2100	3500	4300	3500	2800	4200	6250	4900
	9	630	800×2100	1400	1130	1800	1800	3700	1800	2100	3500	4300	3500	3100	4500	6600	5100
	10	700	800×2100	1400	1250	1800	1900	3700	1900	2100	3600	4300	3600	3400	4900	7200	5350
1.5	11	750	800×2100	1400	1350	1800	2000	3700	2000	2100	3700	4300	3700	3800	5400	7800	5600
	13	900	900×2100	1600	1350	2000	2000	4100	2000	2300	3800	4700	3800	4300	5900	9400	6700
	15	1000	900×2100	1600	1450	2000	2100	4100	2100	2300	3900	4700	3900	4600	6200	9900	6900
	17	1150	1000×2100	1800	1450	2350	2150	4800	2150	2650	4000	5400	4000	7700	9400	12000	8700
1.75	20	1350	1000×2100	1800	1650	2350	2400	4850	2400	2650	4300	5450	4300	8200	10000	13600	9500
	24	1600	1100×2100	2000	1700	2550	2450	5250	2450	2850	4400	5850	4400	8700	11600	15400	11600

전원설비 용량

모터 용량(KW)	220V Class		380V Class	
	MCCB 용량(A)	인입선(mm ²)	MCCB 용량(A)	인입선(mm ²)
5.5	40	10	30	6
7.5	50	16	30	6
11	60	16	40	10
15	100	25	50	10
22	125	35	60	16
30	—	—	75	25

■ 기계실 없는 엘리베이터 (MRL Type)



표준 규격

정격속도(m/sec)	오버헤드(OVERHEAD)		피트(PIT)	
	6 ~ 15 인승	17,20,24 인승	6 ~ 15 인승	17,20,24 인승
1.0(60)	4000	4200	1500	1600
1.5(90)	4300	4400	1700	1700
1.75(105)	4400	4500	1800	1800

정격속도(m/sec)	적재하중(kg)	출입문 폭×높이(mm)	카내부 규격(mm)	승강기 내부규격(mm×mm)				카 좌우측 승강로 공간(mm)		머신룸 반력값(kg)				피트 반력값(kg)			
				1 Car		2 Car		AL	AR	R1	R2	R3	R4	P1	P2		
				X	Y	X2	Y										
1.0	6	450	700×2100	1150	1130	1900	1800	3900	1800	500	200	1950	3900	1250	450	7920	6300
	8	550	800×2100	1200	1200	2000	1800	4200	1800	500	200	2050	4200	1350	500	8650	6700
	9	630	800×2100	1400	1250	2000	1800	4200	1800	500	200	1950	4450	1400	550	9000	6900
	10	700	800×2100	1300	1300	2100	1850	4400	1850	500	200	2200	4850	1550	650	10100	7700
1.5	11	750	800×2100	1400	1300	2150	1850	4400	1850	500	200	2150	5050	1550	750	10600	8000
	13	900	900×2100	1600	1350	2300	1900	4800	1900	500	200	2500	5650	1750	850	11950	8900
	15	1000	900×2100	1600	1450	2300	2000	4800	2000	500	200	2650	5800	1850	900	12650	9350
	17	1150	1000×2100	1800	1450	2600	2100	5300	2100	525	225	3100	6150	2300	750	14100	10300
1.75	20	1350	1000×2100	1800	1650	2800	2400	5750	2400	675	275	3500	7450	2600	1000	16600	12150
	24	1600	1100×2100	2000	1700	3000	2400	6150	2400	675	275	3700	8450	2900	1200	18550	13350

전원설비 용량

모터 용량(KW)	220V Class		380V Class	
	MCCB 용량(A)	인입선(mm ²)	MCCB 용량(A)	인입선(mm ²)
7.5	50	16	30	6
11	60	16	40	10
15	100	25	50	10
22	125	35	60	16



Seoul Office

SILVER Elevator Korea
49, Bongeunsa-ro 22-gil, Gangnam-gu, Seoul, 06127, Korea
Tel : +82_2_3275_2065 Fax : +82_2_368_1199

Chilseo Office

(주) 실버엘리베이터
94, Gongdandong 4-gil, Chilseo-myeon, Haman-gun, Gyeongsangnam-do, 52002, Korea
Tel : +82_55_716_0072 Fax : +82_55_716_0073

Factory

75, Gongdandong 4-gil, Chilseo-myeon, Haman-gun, Gyeongsangnam-do, 52002, Korea
Tel : +82_55_312_3531,7 Fax : +82_55_368_3630

All the information in this catalogue is only for reference.
SILVER Elevator Korea reserves the right to alter product design and specification without prior notice.
Copyright © 2017 SILVER Elevator Korea
Website : www.silverelkorea.com